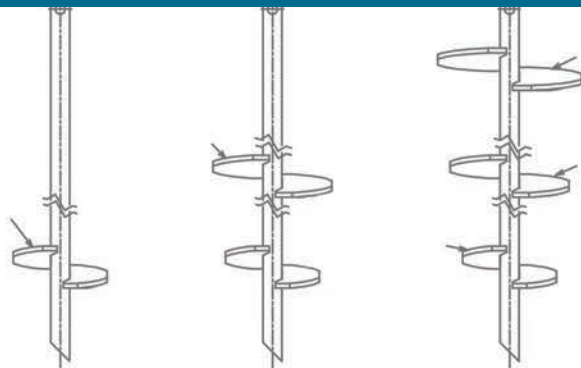
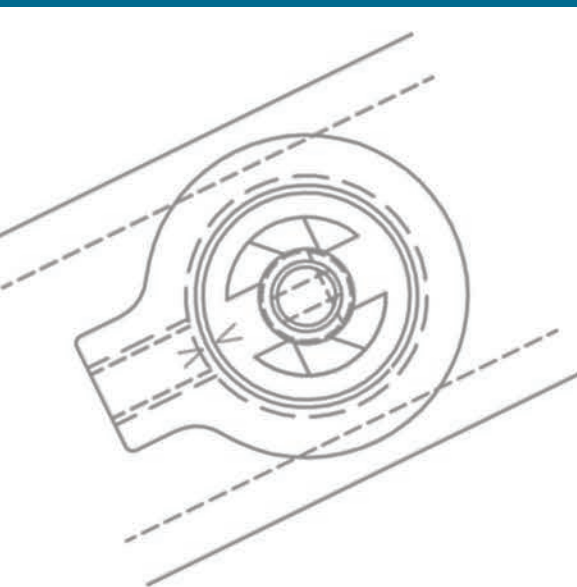


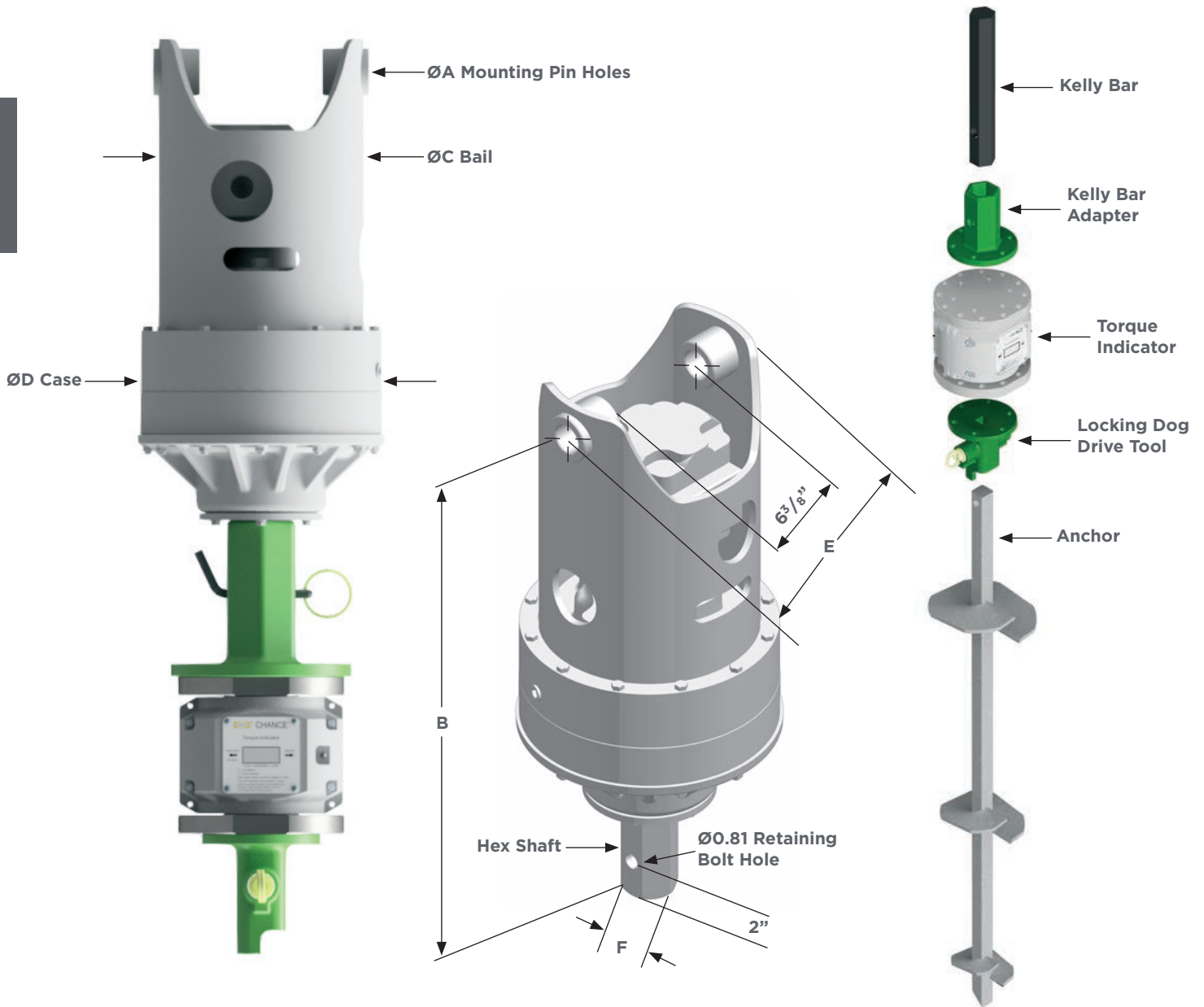
# CHANCE<sup>®</sup> HELICAL SOLUTIONS

## INSTALLING TOOLS CATALOG



# TYPICAL TOOL-STRINGS

2



## PRODUCT DATA - DRIVE HEADS TABLE 1

Catalog No.	Running Torque		Flow gpm	Speed rpm	Weight		Dimensions (in, cm)											
	ft-lb	N-m			lb	kg	A	B	C	D	E	F						
C3030927	6,500 @ 2,400 psi	8,100 @ 165 BARS	40	36	246	112	1.5	3.8	29.5	74.9	10.7	27.2	13.0	33.0	11.4	28.9	2.5	6.4
C3030928	12,000 @ 2,400 psi	15,600 @ 165 BARS	40	19	246	112	1.5	3.8	29.5	74.9	10.7	27.2	13.0	33.0	11.4	28.9	2.5	6.4
C3031577 (low)	20,000 @ 2,750 psi	27,000 @ 190 BARS	40	13	510	230	1.5	3.8	38.5	97.9	14.0	35.6	14.0	35.6	14.5	36.8	2.625	6.7
C3031577 (high)	8,200 @ 2,750 psi	11,000 @ 190 BARS	40	25	510	230	1.5	3.8	38.5	97.9	14.0	35.6	14.0	35.6	14.5	36.8	2.625	6.7

Because Hubbell has a policy of continuous product improvement, we reserve the right to change design and specifications without notice.



# KELLY BAR ADAPTERS

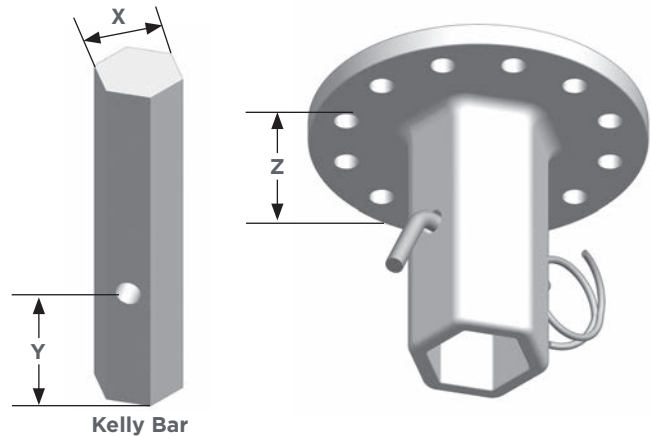
Selecting the correct Kelly bar adapter is key to building a proper drive string.

**Follow these two easy steps:**

1. Remove the auger from the driver and carefully measure the X and Y dimensions of the Kelly bar.
2. Match the shape of the Kelly bar and the X and Y dimensions with the Kelly bar adapter charts below. The Y dimension on the Kelly bar adapter must be equal to or greater than the Y dimension on the intended Kelly bar.

**A Note about Bolt Circles**

CHANCE® anchor installing tools are provided with appropriate bolt circles for the expected service. The torque limitations for the two standard bolt circles are given in the chart to the right. **Never exceed the rated torque of any CHANCE installing tool.**



Bolt Circle	Max. Torque
(6) 1/2" Grade 5 bolts on 5-1/4" bolt circle	10,000 ft-lb
(12) 5/8" Grade 5 bolts on 7-5/8" bolt circle	30,000 ft-lb

**5-1/4" BOLT CIRCLE KELLY BAR ADAPTER**  
TABLE 2

Catalog No.	Kelly Bar Shape	Dimensions			Weight (lb)
		X	Y	Z	
630016	Square	2-1/4"	2-1/4"	3-1/2"	10
630017	Square	2-1/4"	2-1/4"	3-1/2"	10
630013	Hex	2"	5"	6-1/8"	10
630013A	Hex	2"	3-1/4"	6-1/8"	10
360012HD	Hex	2-5/8"	4-1/4"	8-1/8"	12
630011HD	Hex	2-1/2"	4-1/4"	8-1/8"	12

**For 10,000 ft-lb Maximum Installing Torque**

Each of these Kelly bar adapters has six holes for 1/2" bolts on a 5-1/4" bolt circle and comes with six 1/2" Grade 5 bolts, nuts & lockwashers, bent-arm pin with coil lock.

**7-5/8" BOLT CIRCLE KELLY BAR ADAPTER**  
TABLE 3

Catalog No.	Kelly Bar Shape	Dimensions			Weight (lb)
		X	Y	Z	
C3030936	Hex	2-1/2"	4-3/8"	8-1/4"	23
C3030937	Hex	2-5/8"	4-3/8"	8-1/4"	23
C3030940	Hex	3"	3-1/2"	8"	27
C3030955	Square	2-1/2"	2-1/4"	7"	22
C3030958	Square	3"	3-1/2" & 2-1/16"	7"	23

**For 30,000 ft-lb Maximum Installing Torque**

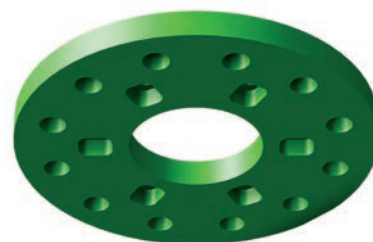
Each of these Kelly bar adapters has twelve holes for 5/8" bolts on a 7-5/8" bolt circle and comes with twelve 5/8" Grade 5 bolts, nuts & lockwashers, bent-arm pin with coil lock.

## BOLT CIRCLE ADAPTER

The T3030166N is for use between a tool having a 5-1/4" bolt circle and one having a 7-5/8" bolt circle. It is limited to 10,000 ft-lb.

**BOLT CIRCLE ADAPTER**  
TABLE 4

Catalog No.	Description	Weight (lb)
T3030166N	Bolt circle adapter with one 1/2" x 5-1/4" bolt circle and one 5/8" x 7-5/8" bolt circle	11



T3030166N

Because Hubbell has a policy of continuous product improvement, we reserve the right to change design and specifications without notice.

# TORQUE INDICATORS



C3031689



C3031690



C3031723

## WIRELESS TORQUE INDICATOR

Using the CHANCE® wireless torque indicator, you can install screw anchors to a pre-determined torque value, which gives a positive indication of anchor holding capacity in any soil type. The handheld wireless data logger gives real time information on torque while storing for easy download. The Indicator mounts between the Kelly bar adapter and drive tool (or locking dog assembly). The LCD display is easy to read in full daylight and gives the operator a direct readout of installation torque at all times.

Operational temperature range: -30° to 80°C (-22° to 175° F)

Accuracy: ± 500 ft-lb at any reading

Torque is measured using strain gauges

No shear pins to replace

Powered by a standard 9V battery

Indicator with wireless display

- Torque is displayed on Indicator and on wireless display
- Multiple wireless display units can be linked to indicator
- Solid one-piece spool design to withstand bending loads. Top and bottom flange, each provides six holes tapped 1/2"- 13 on a 5-1/4" bolt circle and twelve holes tapped 5/8"- 11 on a 7-5/8" bolt circle.

Data Logger

- Torque displayed on data logger
- Torque and GPS data recorded and saved on data logger
- Data downloadable from data logger to computer spreadsheet
- Maximum torque rating 30,000 ft-lb

## WIRELESS TORQUE INDICATOR TABLE 5

Catalog No.	Description
C3031689	Indicator with Wireless Torque Display
C3031690	Data Logger
C3031723	Wireless Torque Display
C3031724	Indicator Kit (Indicator with Wireless Torque Display and Data Logger)

Because Hubbell has a policy of continuous product improvement, we reserve the right to change design and specifications without notice.

# SHEAR PIN



Top and bottom each has six holes tapped 1/2" - 13 on a 5-1/4" bolt circle.

## SHEAR PIN TORQUE LIMITER

Catalog Number C3030044 for installing torques up to 10,000 ft-lb

### Advantages

- Protection for anchors and installing tools by disconnecting the power when the installing torque reaches a preselected level
- Usable in very rocky soil
- Durable-does not require special storage or handling

## SHEAR PIN TORQUE LIMITER TABLE 6

Catalog No.	Description	Weight (lb)
C3030044	Shear Pin Torque Limiter	54
*C3030045	Carton of Shear Pins (Approx. 1700 pins)	50
*T3031420	Box of Shear Pins (Approx. 510 pins)	15

\*Each shear pin provides 500 ft-lb of torque.

Because Hubbell has a policy of continuous product improvement, we reserve the right to change design and specifications without notice.



# DRIVE TOOLS



C3031502

## SS DRIVE TOOLS

These tools include our proprietary alignment window that helps reduce chance of finger pinch when anchor is inserted into tool. Alignment window also makes it faster and easier to line up the anchor and anchor tool.

These drive tools require the appropriate Kelly bar adapter (page 3). Each comes with bolts, nuts and lock washers.

### SS DRIVE TOOLS TABLE 7

Catalog No.	SS Anchor Series Tool	Bolt Circle, Holes	Approx. Weight (lb)
C3031502	SS125	5-1/4", (6) 1/2" holes	10
639001	SS5/SS150	5-1/4", (6) 1/2" holes	8
C3030195*	SS175	7-5/8", (12) 5/8" holes	18
C3030201*	SS200	7-5/8", (12) 5/8" holes	30
C3030202*	SS225	7-5/8", (12) 5/8" holes	30

\*Coupling to a Kelly bar adapter with a 5-1/4" bolt circle requires use of T3030166N adapter and limits tool's maximum torque rating to 10,000 ft-lb.



C3031650

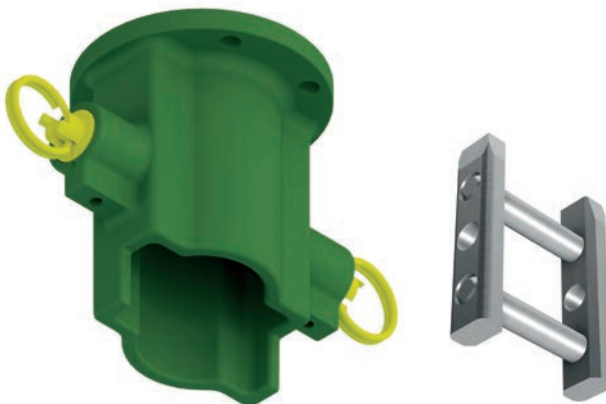
Each of these drive tools includes an integral set of locking dogs that attach the drive tool to the anchor. There is no need to use bent arm pin and coil lock to attach these tools to an anchor.

These drive tools require the appropriate Kelly bar adapter, sold separately. Each comes with bolts, nuts and lockwashers.

### SS DRIVE TOOLS TABLE 8

Catalog No.	SS Anchor Series Tool	Bolt Circle, Holes	Approx. Weight (lb)
C3031650	SS5, SS150	5-1/4", (6) 1/2" holes	10
C3031645	SS175	7-5/8", (12) 5/8" holes	21

Because Hubbell has a policy of continuous product improvement, we reserve the right to change design and specifications without notice.



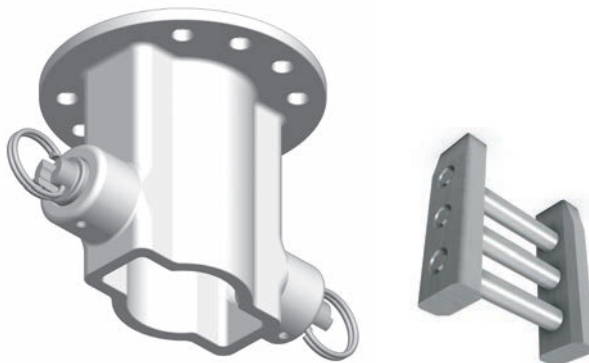
C3031754

### RS2785 DRIVE TOOLS

Each drive tool comes with one set of pins, bolts, nuts, and lock washers.

RS2785 DRIVE TOOLS TABLE 9		
Catalog No.	Bolt Circle, Holes	Approx. Weight (lb)
C3031626*	7-5/8", (8) 5/8" holes; with pin assembly	44
C3031624	RS2785 pin assembly only for C3031626	8
C3031754	5-1/4", (4) 1/2" holes; with pin assembly	23
C3031753	RS2785 pin assembly only for C3031754	4

\*Drive tool maximum torque rating 13,000 ft-lb



C3031627

### RS3500 DRIVE TOOLS

Each drive tool comes with one set of pins, bolts, nuts and lockwashers.

RS3500 HELICAL PIER ANCHOR DRIVE TOOLS TABLE 10		
Catalog No.	Bolt Circle, Holes	Approx. Weight (lb)
C3031627*	7-5/8, (8) 5/8" holes with pin assembly	46
C3031620	RS3500 pin assembly only	6

\*Drive Tool maximum torque rating 13,000 ft-lb

Because Hubbell has a policy of continuous product improvement, we reserve the right to change design and specifications without notice.



C3031605

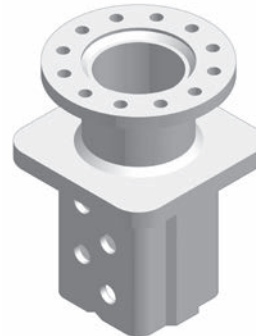


C3031546

### RS4500 DRIVE TOOLS

Each comes with bolts, nuts, and lock washers.

RS4500 DRIVE TOOLS TABLE 11		
Catalog No.	Bolt Circle, Holes	Approx. Weight (lb)
C3031546	7-5/8", (12) 5/8" holes	30
C3031605	7-5/8", (8) 5/8" holes; with pin assembly	58
C3031606	RS4500 two-pin set only	8



C3031521

### RS6625 AND RS8625 DRIVE TOOLS

RS6625 AND RS8625 DRIVE TOOLS TABLE 12				
Model	Catalog No.	Bolt Circle, Holes	Coupling	Approx. Weight (lb)
RS6625	C3031521*	7-5/8", (12) 5/8" holes	Box	90
RS8625	C3031508*	7-5/8", (12) 5/8" holes	Box	96
RS6625	C3031720	8-5/8", (12) 5/8" holes	Plate	95
*RS6625	C3031819*	7-5/8", (12) 5/8" holes	Plate	69
RS8625	C3031636	8-5/8", (12) 5/8" holes	Plate	95
RS8625	C3031800*	7-5/8", (12) 5/8" holes	Plate	303

\*Maximum torque rating 30,000 ft-lb

Because Hubbell has a policy of continuous product improvement, we reserve the right to change design and specifications without notice.





C3030139\*



C3030684\*\*

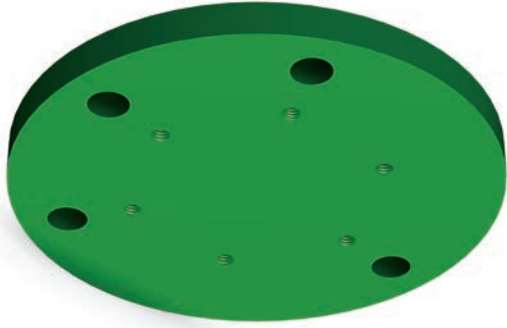
**UNIVERSAL TOOLS - BASE PLATE FOUNDATIONS**

These tools fit foundation anchors with 9" thru 13-1/2" bolt circles.  
 C3030139 connects direct to a Kelly bar adapter with (6) 1/2" furnished bolts.  
 C3030684 includes (12) 5/8" bolts.

**UNIVERSAL TOOLS  
TABLE 13**

Catalog No.	Bolt Circle, Holes	Approx. Weight (lb)
C3030139*	5-1/4", (6) tapped holes	18
C3030684**	7-5/8", (12) drilled holes	49

\*Maximum torque rating for C3030139: 10,000 ft-lb  
 \*\*Maximum torque rating for C3030684: 20,000 ft-lb. Coupling C3030684 to a Kelly bar adapter with a 5-1/4" bolt circle requires use of T303166N adapter and limits tool's maximum torque rating to 10,000 ft-lb.



T3030247

**DECORATIVE LIGHTING FOUNDATION DRIVE TOOL**

This 10" diameter drive plate fits the 8" bolt circle of decorative lighting foundations. Connects direct to a Kelly bar adapter with (6) 1/2" furnished bolts.

**DECORATIVE LIGHTING FOUNDATION DRIVE TOOL  
TABLE 14**

Catalog No.	Bolt Circle, Holes	Approx. Weight (lb)
T3030247	5-1/4", (6) 1/2" tapped holes	16

\*Maximum torque rating 10,000 ft-lb

Because Hubbell has a policy of continuous product improvement, we reserve the right to change design and specifications without notice.



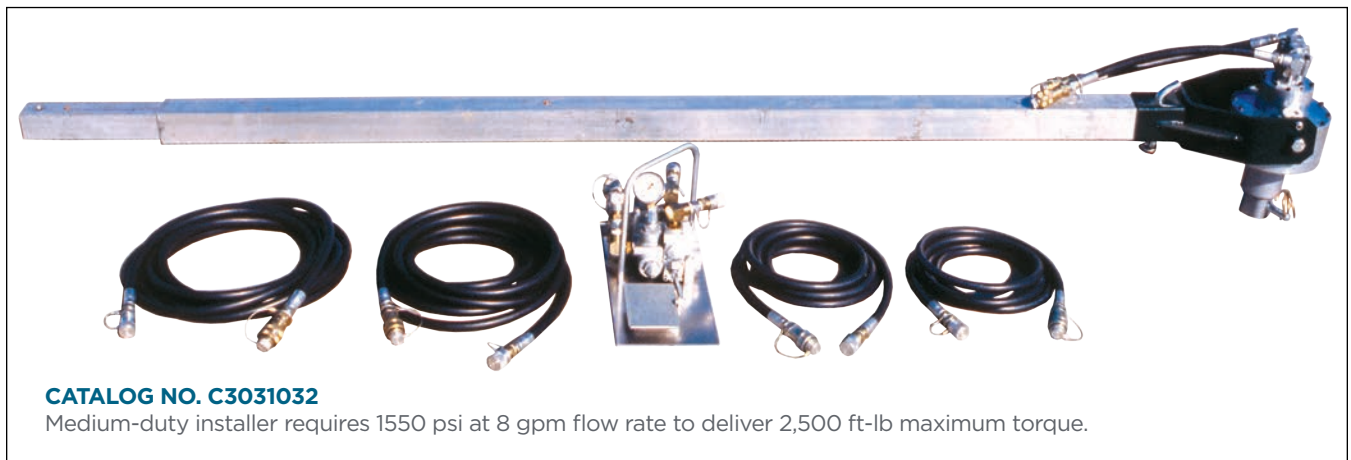
# PORTABLE ANCHOR INSTALLERS FOR SMALL FOUNDATIONS

## 2,500 FT-LB TORQUE CAPACITY HYDRAULIC POWER DRIVE

### ECONOMICAL MANUAL OPERATION AND PORTABILITY FOR REMOTE SITES (COMMON ANCHOR INSTALLATIONS)

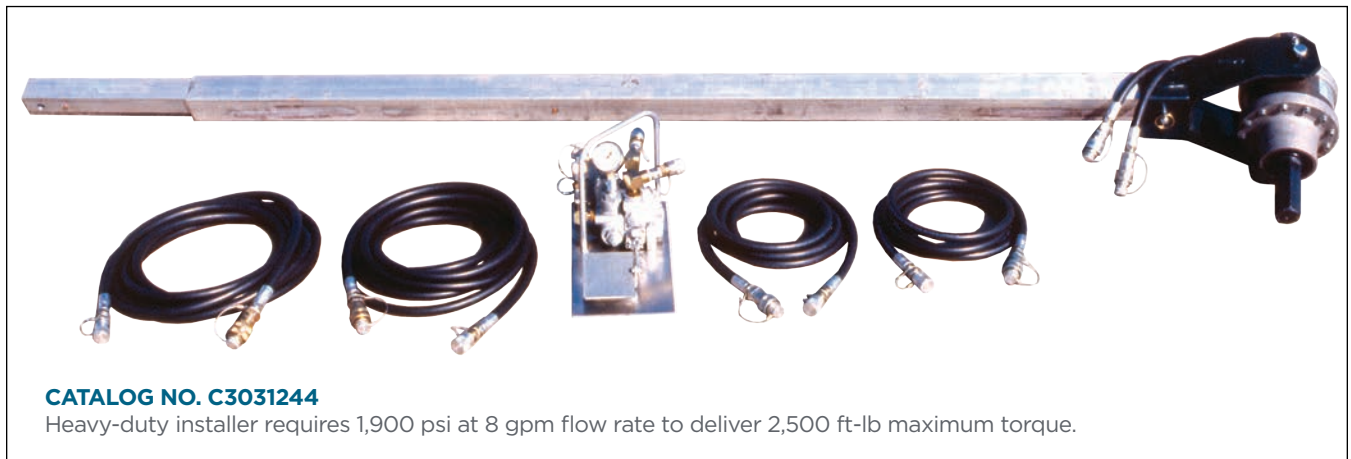
For most shaft-driven guy anchors and smaller screw foundations, these compact drivers get into areas where large equipment cannot go or is impractical. Operator does not need to resist the torque generated by anchor installation. Counter-torque transmits through a torque bar from the drive head to the earth or other restraint. This frees the operator for the task of guiding the anchor path.

Built-in bypass valve limits output to 2,500 ft-lb maximum. Two-way foot pedal gives operator direct control over drive and reverse directions, and hoses (two 12 ft and two 25 ft) come with quick couplers for all connections from power supply to foot control to drive head. Pivoting drive-head yoke connects with bent-arm pin to square-tubular torque bar which telescopes from 8 feet to 10 feet as needed.



**CATALOG NO. C3031032**

Medium-duty installer requires 1550 psi at 8 gpm flow rate to deliver 2,500 ft-lb maximum torque.



**CATALOG NO. C3031244**

Heavy-duty installer requires 1,900 psi at 8 gpm flow rate to deliver 2,500 ft-lb maximum torque.

*Because Hubbell has a policy of continuous product improvement, we reserve the right to change design and specifications without notice.*

# 2,500 FT-LB PORTABLE ANCHOR INSTALLERS

## C3031032 Product Data - Medium Duty

**GREASE FILLED GEAR CASE. SINGLE CATALOG NUMBER ABOVE INCLUDES ALL ITEMS BELOW. EACH ITEM ALSO MAY BE ORDERED BY SEPARATE NUMBER FOUND BELOW.**

*Hydraulic Control Valve	C3031031
Two 25-ft Hydraulic Hoses	C4176121 (each)
*Hydraulic Drive Head	C3031180
Yoke Assembly	E3030680
*Two 12-ft Hydraulic Hoses	E3030876 (pair)
Square Torque Bar Assembly	E3031041

Output shaft is 1-1/2" square socket. Requires C3031230 and flanged drive tool (order separately) to install anchors other than 1-1/2" square or 1-1/4" round shaft.

\*Note hydraulic components are not interchangeable between C3031032 and C3031244.

## C3031244 Product Data - Heavy Duty

**SEALED OIL-FILLED GEAR CASE. SINGLE CATALOG NUMBER ABOVE INCLUDES ALL ITEMS BELOW. EACH ITEM ALSO MAY BE ORDERED BY SEPARATE NUMBER FOUND BELOW.**

*Hydraulic Control Valve	C3031247
Two 25-ft Hydraulic Hoses	C4176121 (each)
*Hydraulic Drive Head	C3031233
Yoke Assembly	E3030680
*Two 12-ft Hydraulic Hoses	E3031253 (pair)
Square Torque Bar Assembly	E3031041

Output shaft is 2" Hex. - requires Kelly bar adapter 630013 and flanged drive tool (order separately) to install all anchors.

\*Note hydraulic components are not interchangeable between C3031032 and C3031244.

### OPTIONAL HYDRAULIC POWER UNIT C3031201

For easy wheeling to worksite, hydraulic drive head and foot control secure by rubber strap included to angle braces atop the cart frame and hoses ride on handles.

#### Features:

- Cart-mounted on 5/8" diameter axle with two 4.8 x 8 inflatable (30 psi) tires
- 27.25" wide x 34.5" high x 36" long
- Shipping weight with oil: 275 lb

#### Hydraulic Pump with Fan Cooling System:

- Typical output pressure: 2500 psi
- Pump displacement: 8 gpm @ 3400 rpm
- Reservoir capacity: 5 gallons US (shipping cap and vented fill cap provided)

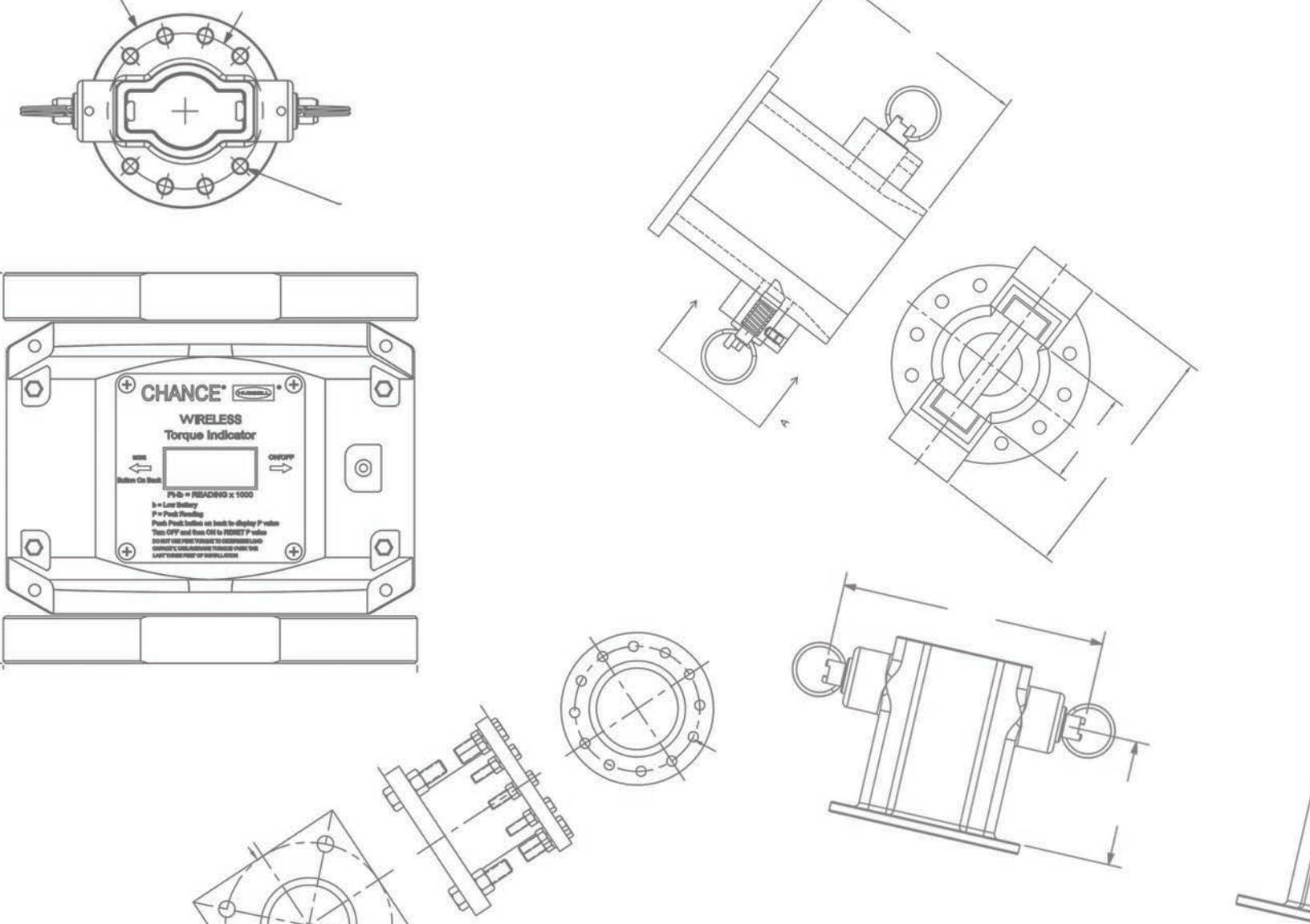
#### Gasoline Engine System:

- 16 hp Briggs & Stratton
- Industrial/Commercial Model 326437, Type 2527
- 12-Volt pushbutton start, 3600rpm (maximum)

Operating instructions are included with anchor installer and hydraulic power unit.



Because Hubbell has a policy of continuous product improvement, we reserve the right to change design and specifications without notice.



**CHANCE**

WIRELESS  
Torque Indicator

Buttons On Back

Pk-0 = PEAKING x 1000

L = Low Battery  
P = Peak Reading  
Peak Peak button on back to display P value  
Turn OFF and then ON to RESET P value  
DO NOT USE FORCE TOGETHER TO REMOVE AND  
REPLACE. WILL DAMAGE TORQUE HEAD AND  
CAUSE DAMAGE TO INSTALLATION

Never Compromise™



CHANCE Civil Construction | 210 North Allen Street | Centralia, MO 65240 | United States of America

©Copyright 2018 Hubbell Incorporated. Because Hubbell has a policy of continuous product improvement, we reserve the right to change design and specifications without notice.  
Printed in the U.S.A. | CA\_04\_124\_E

